



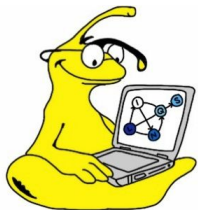
UCSC

Getting Started with PSL

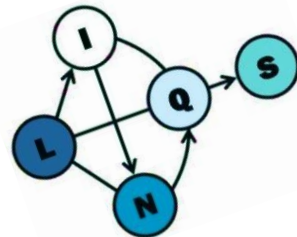
Eriq Augustine and Golnoosh Farnadi

UC Santa Cruz

MLTrain 2018



psl.linqs.org
github.com/linqs/psl



Getting the Code

```
git clone https://github.com/linqs/psl-examples.git
```

```
cd psl-examples/simple-acquaintances/cli
```

```
git checkout uai18
```

Requirements

CLI:

- Java 7/8

Java/Groovy:

- Java 7/8
- Maven

Helper Scripts:

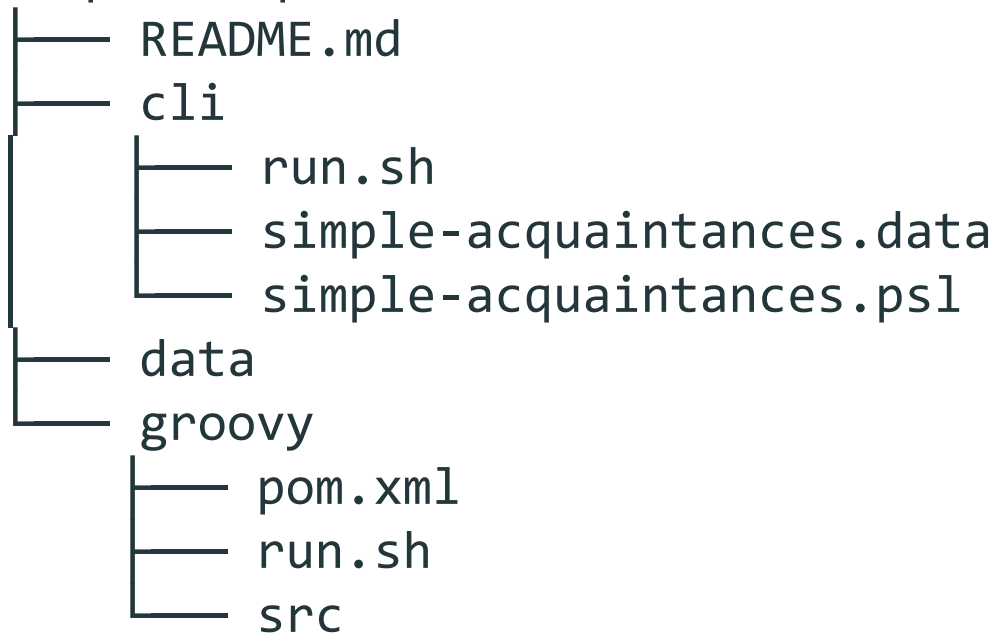
- Linux / Mac / Windows Subsystem for Linux
- wget / curl

Toy Problem

- Predict who knows who.
- Given information:
 - Where people have lived.
 - What people like.
 - Who some people already know.

What a PSL Example Looks Like

simple-acquaintances



Examining the Model

- CLI PSL requires two files:
 - Model/Rules File
 - Defines Rules
 - Data File
 - Defines Predicates
 - Defines Partitions
 - Points to Actual Data

Running a PSL Example

`./run.sh`

Performed by the run script:

- Fetch Data
- Fetch PSL Dependencies
- Build
- Run Weight Learning
- Run Inference
- Evaluate Results
- Output Predictions

Configuring PSL

- CLI Usage
- Modifying Run Script
- Configuration Options
 - Logging
 - Postgres
 - Inference Hyperparams
 - Lazy Inference
- Weight Learning
 - Different Methods